

Safety Assurance Team

Report

04/09/2025

Site visit at Manchester University

Inspection carried out by:

Richard Haigh – SHEQ Manager

Pete Nicholls – Technical Manager



Health & Safety Inspection Findings

- **RAMS**
 - No RAMS available on Job Watch and not found on Group Job

- **DRA**
 - Discussed risk calculations pre-controls for major hazards such as electricity, work at height. I.E. Consequence =5
 - Discussed controls for hot environment to include breaks/drinks.
 - Discussed correct action and recording on DRA to take if unable to access RAMS, I.E State you have not read RAMS when asked the question on the DRA and contact the office.
 - Discussed assessment of safe access and egress and the importance of considering this on the DRA.

- **Lone Working**
 - Engineer could have been alone and unmonitored in the boiler house for a 2 hour period. Action: Revisit and reissue Lone Working Procedure.

- **Slips, Trips, Falls**
 - Site had used concrete supports in the plant room to avoid drilling into the floor. However, this had created a number of trip hazards.
 - Reported this issue to site on the day so that they can apply some visible warning markings

- **Near Miss**

- During our time on site, JBC Engineer reported a near miss in relation to a loose grate cover which he almost fell down. This was reported to site for rectification.



Figure 1: Evidence of Slips, Trips and Falls Finding

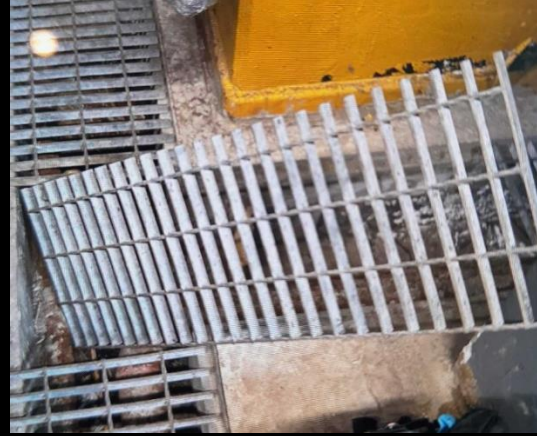


Figure 2: Evidence of Near Miss

Gas Safe Audit Findings

- **Minor Burner Service – University of Manchester**

- Manometer with no calibration sticker or certificate available – **Action: arrange to be swapped out.**
- Manual gas isolation valve installed on low gas inlet switch to the booster. Engineer had not spotted this. A warning notice was raised as this could bypass a safety interlock.
- No RAMS had been attached to the job by the office. However, the engineer had not looked for them. **Action: Call office to attach RAMS to the job.**
- A good overall visual check on all components of the burner as this was a minor service. Letby tests and tightness test carried out. Conversations were had as to where he had carried this out as the was a non-return valve inline. I explained how it should have been done.



Figure 3: Evidence of manometer



Figure 4: Evidence of manual gas isolation valve

Tools & Equipment Findings

- New lock box, padlocks and lock out tag kit required by engineer
- See comments re manometer above
- Gas analyser calibrated but no asset number. **ACTION: report to office to receive asset sticker for analyser.**

Vehicle Safety Check Findings

- **Positive Observation**
 - Vehicle is in a well-kept condition both inside and outside.
- **First Aid Kit**
 - First aid kit had been compiled by the engineer and was not company issued – Check your first aid kit and contents when you complete your vehicle checks, if a new one is required, please inform H&S.
 - I would expect the first aid kit to contain both eye wash and burns gel so please ensure you are checking this as well.

Summary

- On the day we observed a minor burner service. Onsite was 1 JBC service engineer. Opportunities were identified and where possible rectified on the day, whilst other actions have been taken away and will be communicated in due course. Thank you to the JBC engineer on the day who accommodated our visit.